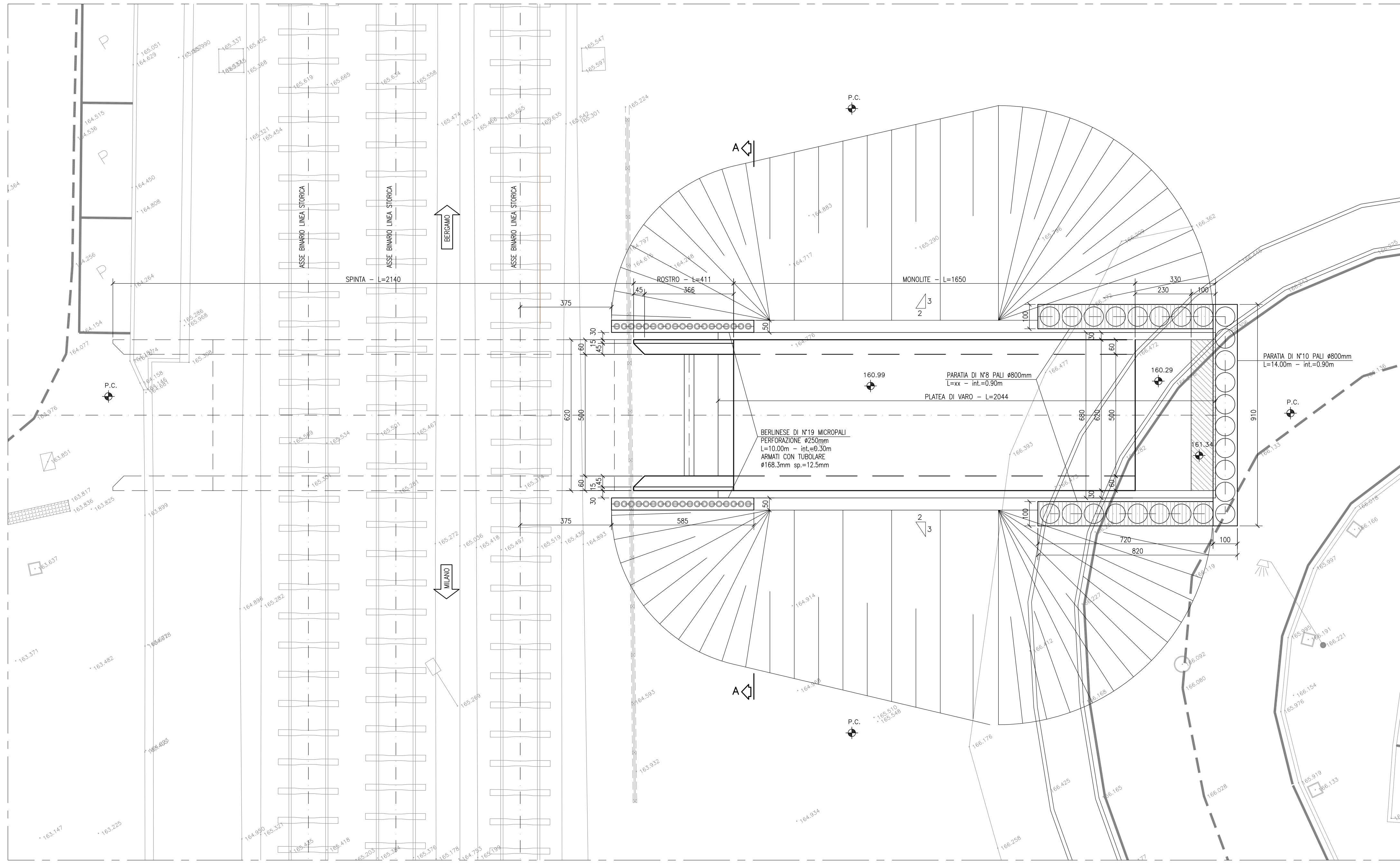
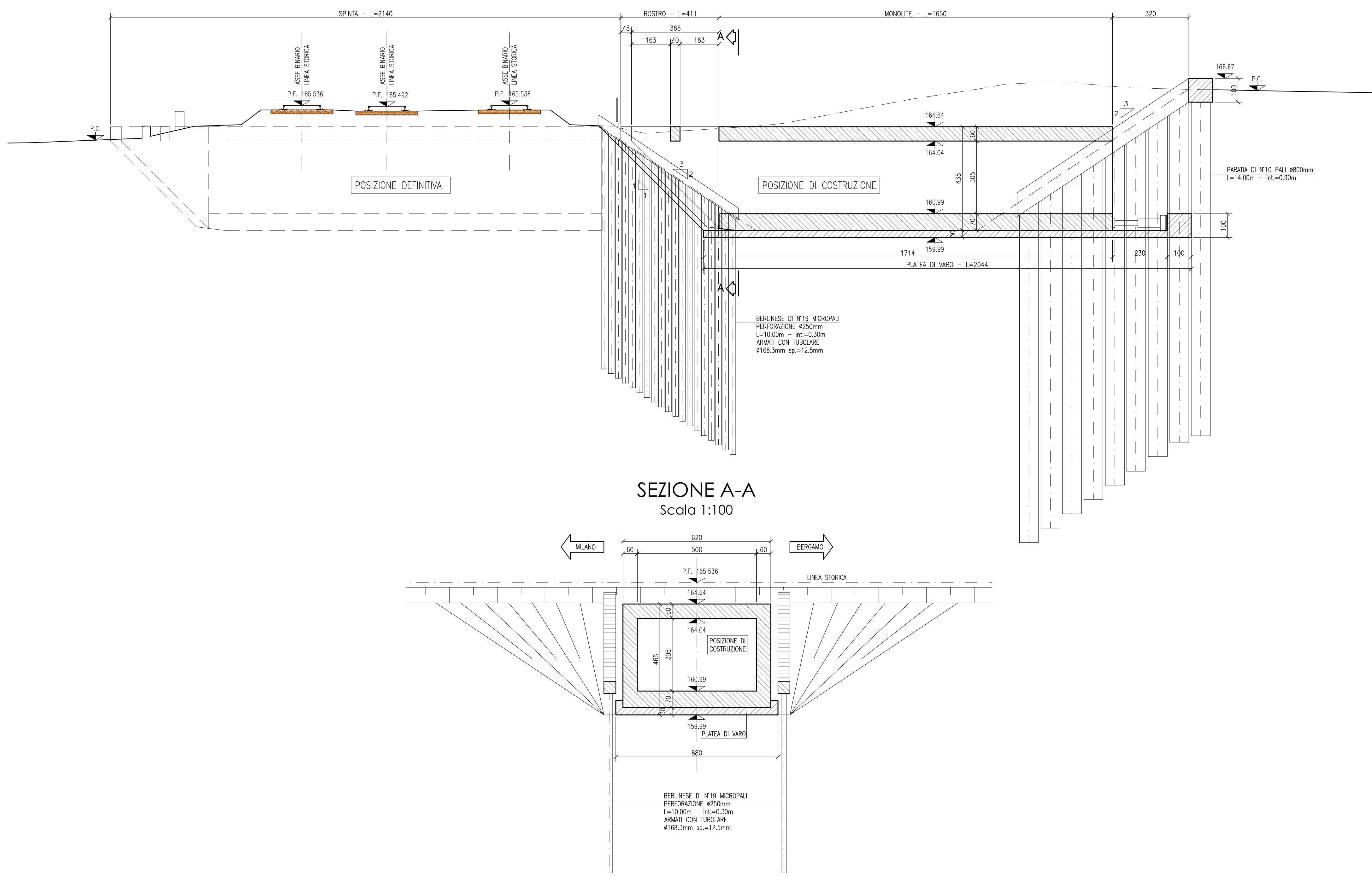


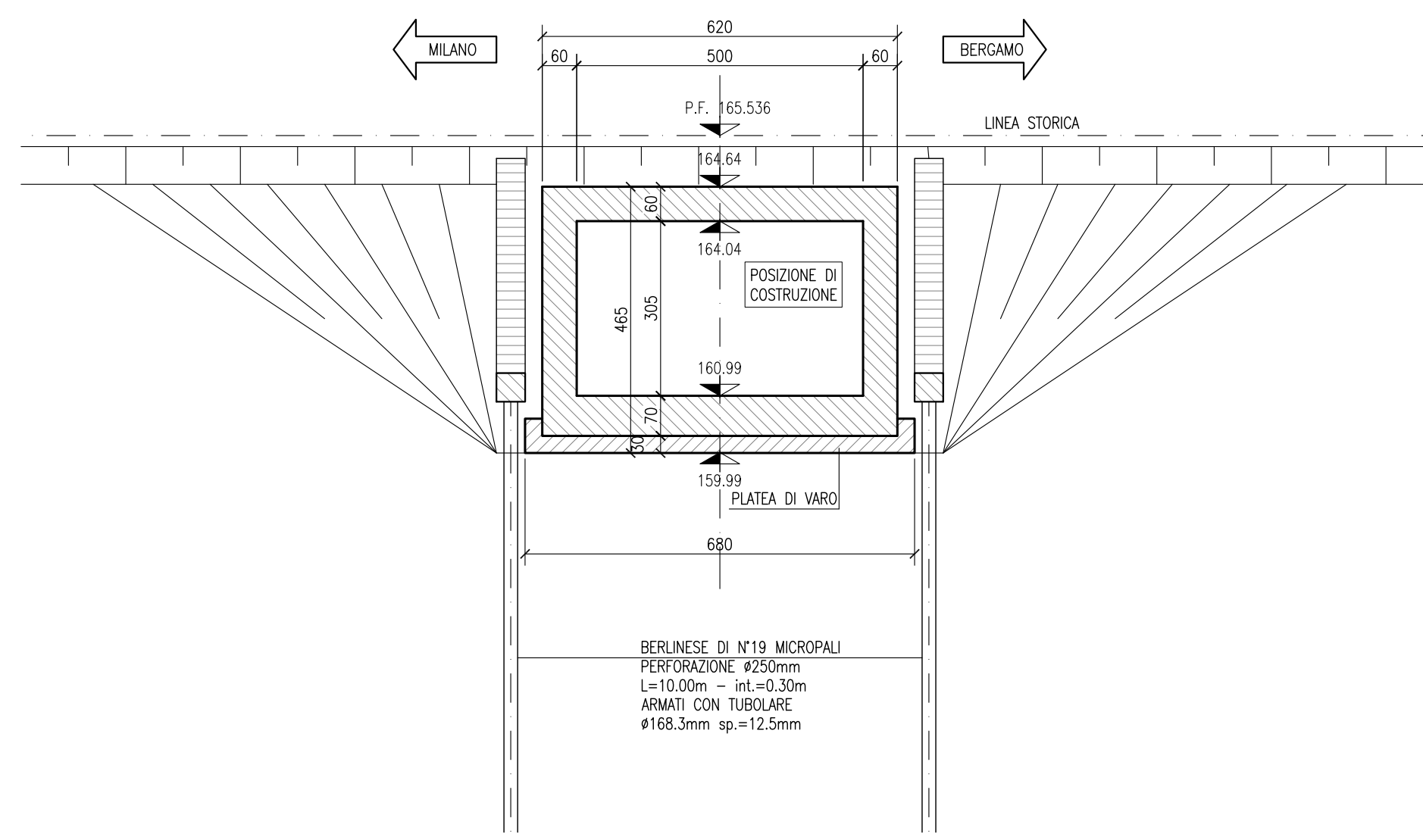
SPINTA MONOLITE - FASE 1
PLANIMETRIA
Scala 1:100



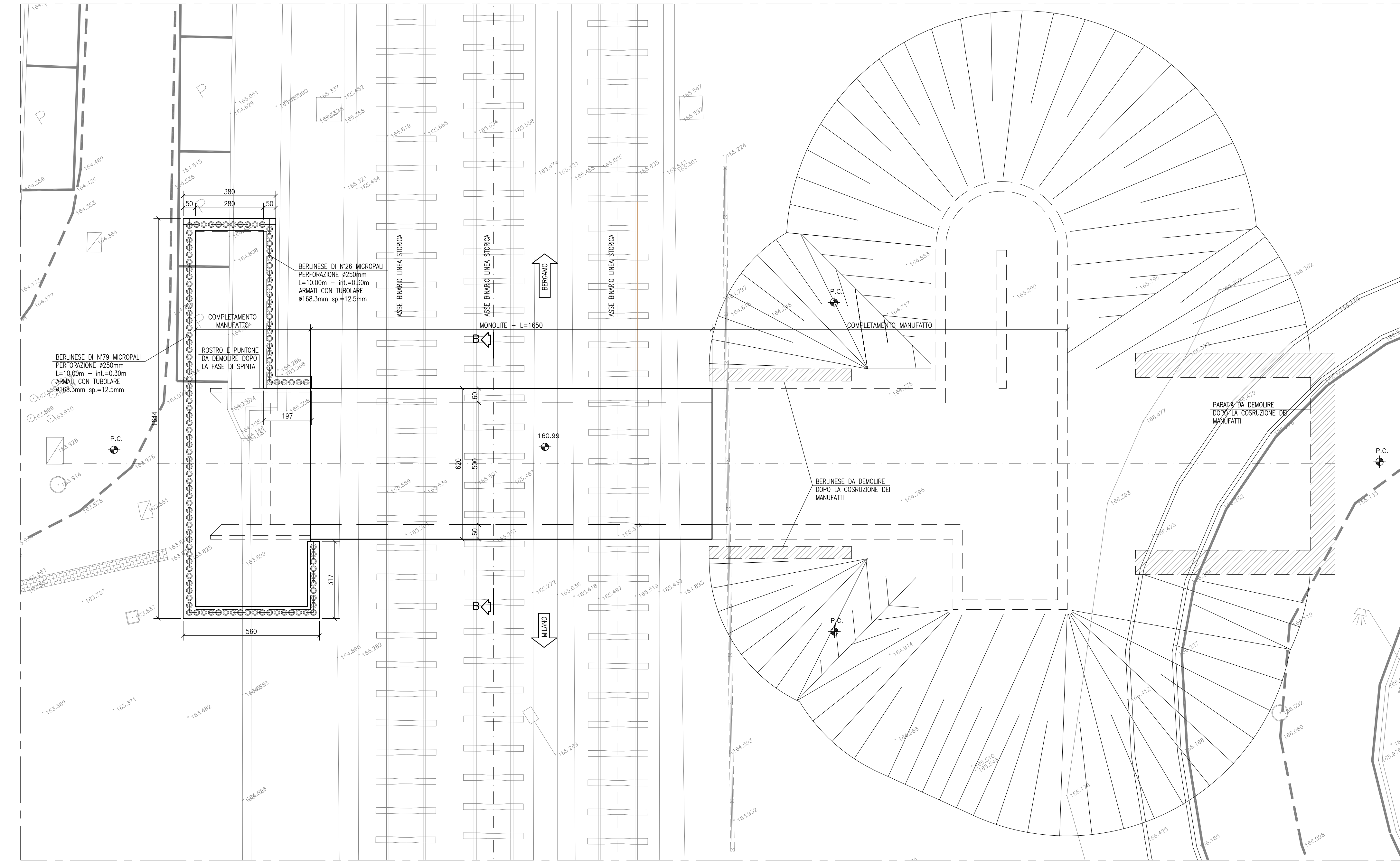
SEZIONE LONGITUDINALE
Scala 1:100



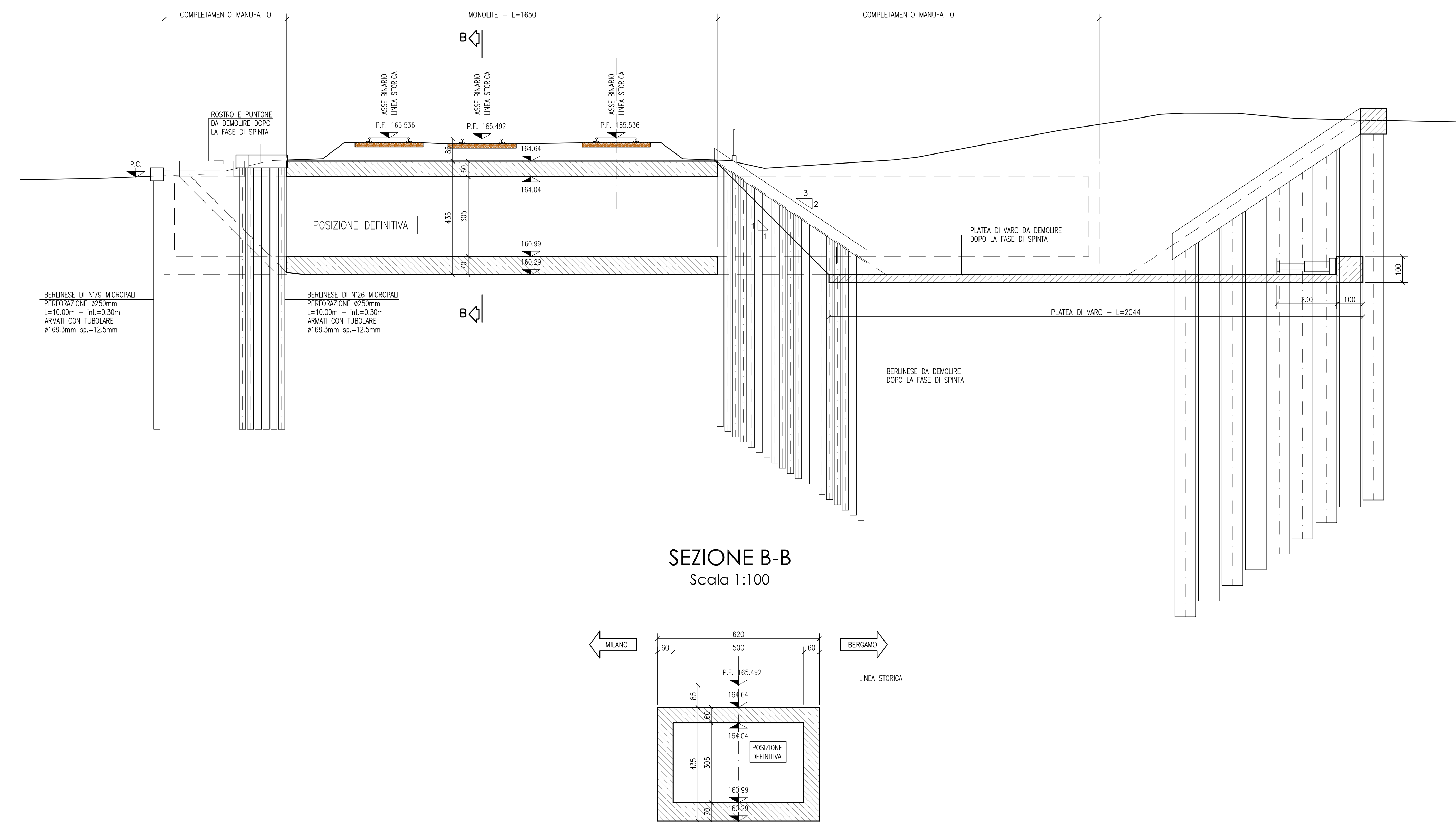
SEZIONE A-A
Scala 1:100



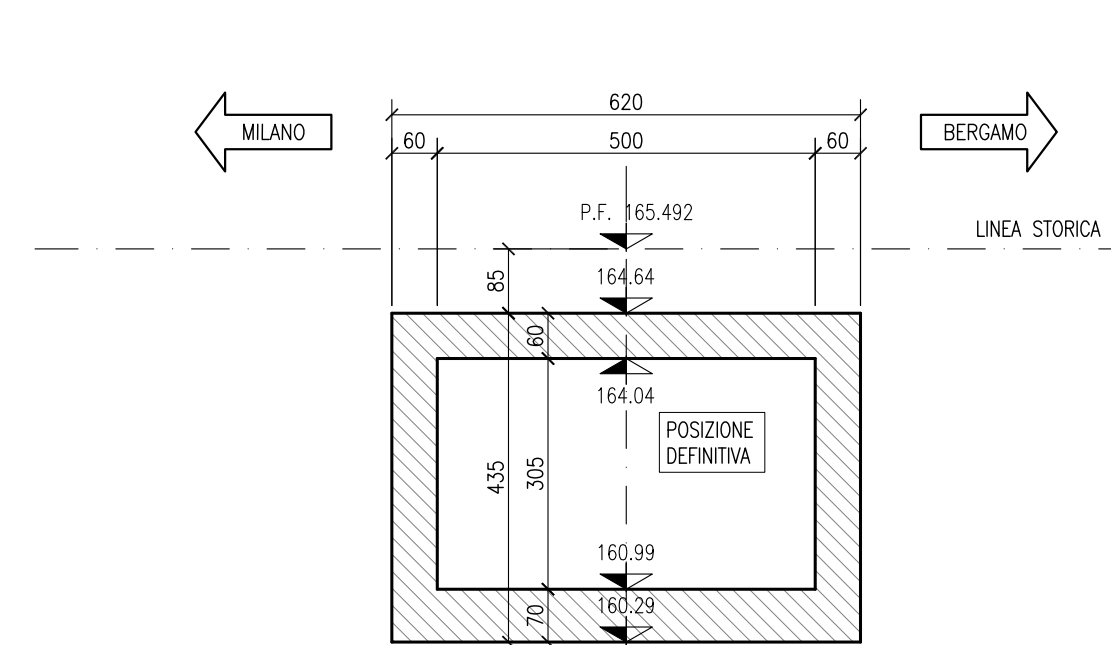
SPINTA MONOLITE - FASE 2
PLANIMETRIA
Scala 1:100



SEZIONE LONGITUDINALE
Scala 1:100



SEZIONE B-B
Scala 1:100



MONZA
COMUNE DI MONZA
PROVINCIA DI MONZA E BRIANZA
Settore Mobilità, Viabilità, Reti

SOTTOPASSO CICLOPEDONALE VIA DE
MARCHI/EINSTEIN FERMATA MONZA EST

PROGETTO DEFINITIVO

FASI ESECUTIVE E SPINTA MONOLITE

TAVOLA:
BA_003_01

DATA:
NOVEMBRE 2018

SCALA:
1:100

nome_file : MB_SLIDE_BA_003_D_01.DWG

R.T.P.



II R.U.P.
Arch. Luciana Rigaglia

Geologo Dr. Nucci Enrico

Dott. Ing. Vito Aiello Dott. Ing. Giulia Melchiori